

Job:
 Type:
 Location:
 Notes:

Date:

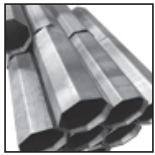
COATINGS

P1

media blasting/ painting/ duplex systems

PREPARATION

STEEL TO BE
 NEAR WHITE
 MEDIA BLASTED



SCIENCE

TEMPERATURE
 CONTROLLED
 5000 SQ FT PAINT
 FACILITY



SYMBOL

PP
 BLP
 BRP
 DBRP
 WP
 IMSP
 GP
 CP

HDG
 FPHDG

DESCRIPTION OF STANDARD OPTIONS

Prime Paint Only
Black Paint
Bronze Paint
Dark Bronze Paint
White Paint
Intermix Metallic Silver Paint
Grey Paint
Custom Paint (RAL or Paint Chip req.)

Hot Dipped Galvanized Only
Finish Paint over HDG

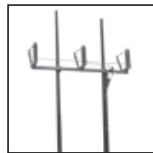
QUALITY

2C POLYURETHANE
 OVER EPOXY GREY
 PRIMER, ALL VOC
 COMPLIANT



DUPLEX SYSTEMS

HOT DIPPED
 GALVANIZED
 MATERIALS SURFACE
 PREPARATION FOR
 URETHANE TOP COATING



We developed a five thousand square foot paint area to accommodate project efficiency, temperature controlled and 5 tonne crane equipped.

Our in-house coating system is comprised of a dual component, polyurethane treatment to a particulate-media blasted mild steel structure, or in some cases, a low pH solution, etched onto a galvanized structure. This is commonly referred to as a duplex system with a mean average of increasing the lifetime of corrosion protection 1-1/2 to 2-1/2 times the cumulative sum of each system.

Our standard colours are BLP/ Black, BRP/ Bronze, DBRP/ Dark Bronze, IMSP/ Natural Aluminum Silver, GP/ Grey and WP/ White. All RAL colours are available to match site-specific needs, i.e.: a custom light fixture colour. High-heat coatings as well as coatings for highly corrosive environments are also available.

For all of your project-specific colour/ coating requirements, contact us for further information.

